

# PURPOSEFUL QUESTIONS



# Wait Time

SUPPORT FOR ALL!

(ACADEMIC LANGUAGE LEARNERS)



Encourage Students to Use Classroom Tools & Supports (e.g. anchor charts, word banks, language frames)



## Wait Time 1 & Wait Time 2

After the teacher asks the question/prompt and before the student responds

- All students have the opportunity to formulate a response

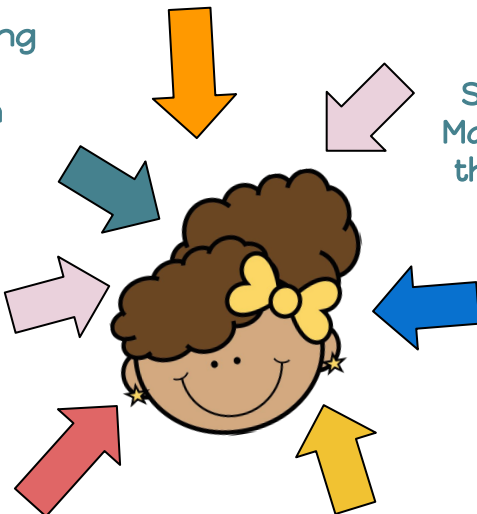
After the student responds to the teacher question/prompt

- Students have the opportunity to modify or extend their responses

Check for Understanding & Adjust Instruction

Ask Fewer Questions! Fewer Questions Should be More Rigorous

Guide & Prompt Students to Make Connections



Allow Students to Make Sense of the Question

Provide the Opportunity for Translanguaging

Avoid Interrupting Processing & Thinking (Language & Content)

## Narrated Wait Time



The teacher states encouraging phrases aloud in a calm manner as the students think about their response.

- Lowers affective filter
- Encourages students to think & embrace their productive struggle
- Helps build positive disposition toward content area or instructional topic

*When you have your response, think about how you will respond using a complete sentence.*

*Be prepared to explain and justify your response.*

*Look around the classroom. Think about what you can use to help you figure out your response.*